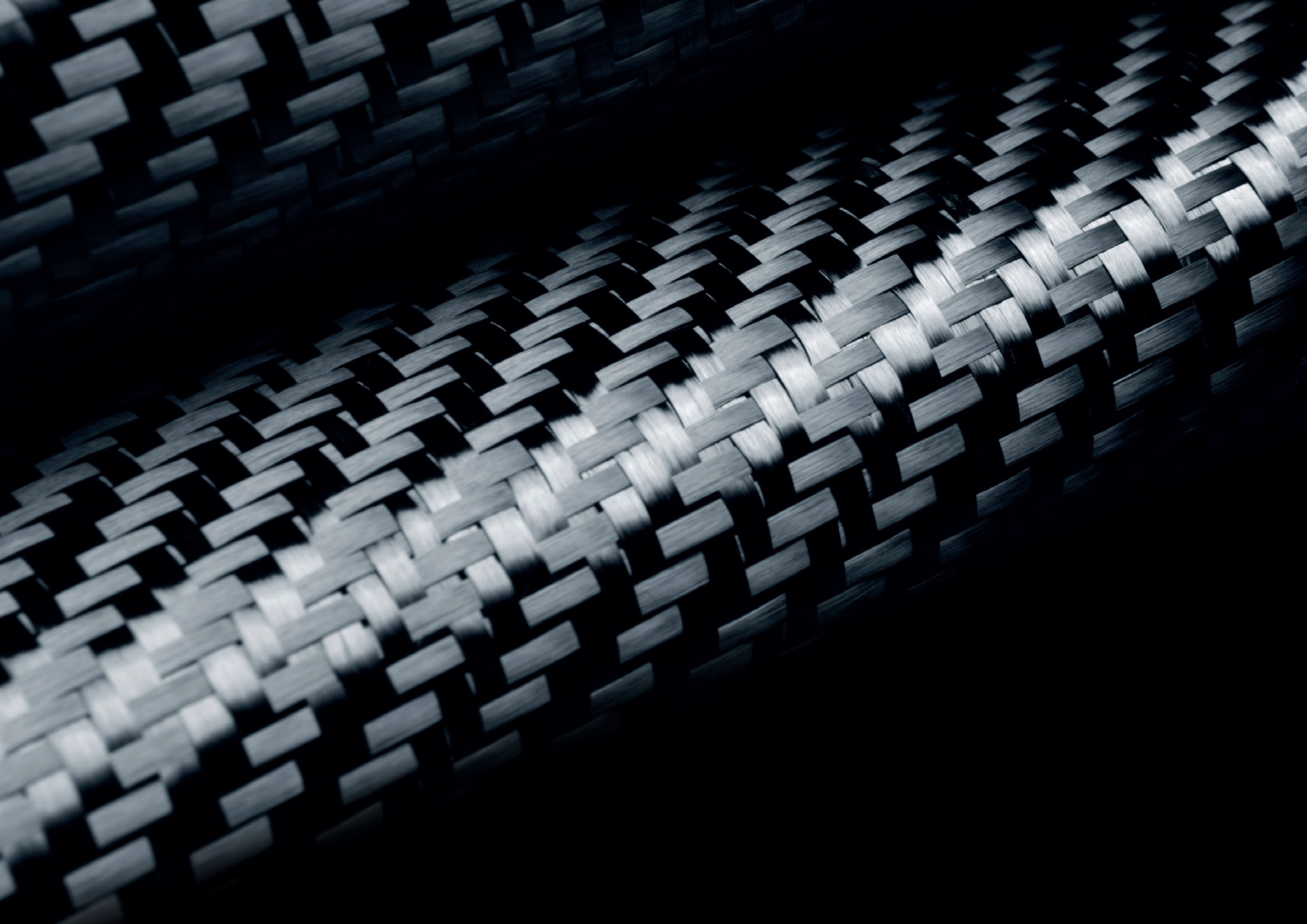


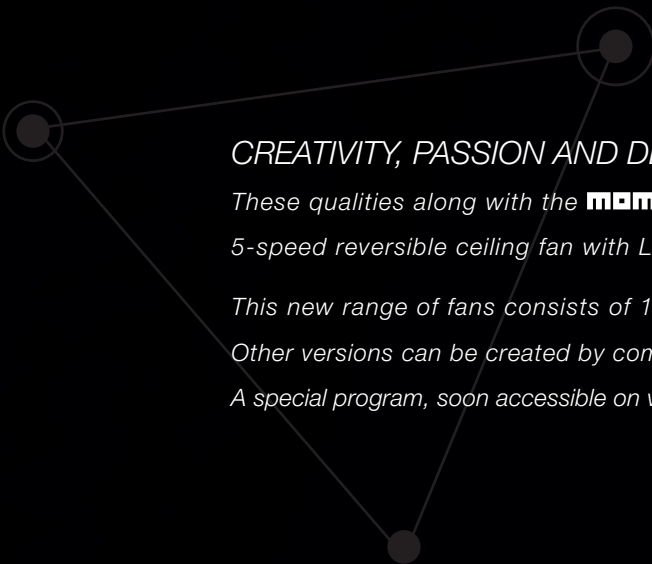


# NORDIK AIR DESIGN

---







*CREATIVITY, PASSION AND DESIGN are the most essential values.*

*These qualities along with the **momoDESIGN**® design centre partnership have led to the creation of NORDIK AIR DESIGN. 5-speed reversible ceiling fan with LED lighting and integrated RF remote control.*

*This new range of fans consists of 12 models and 4 standard configurations.*

*Other versions can be created by combinations of 4 different motor unit kits, 12 different suspension kits and 16 different blade kits.*

*A special program, soon accessible on [vortice.com](http://vortice.com), will guide customers in configuring the product that most suits their tastes and/or needs.*



# NORDIK AIR DESIGN

5-speed reversible ceiling fan

## MODERN, DISTINCTIVE DESIGN:

*Its most distinguishing feature is its refined aesthetic look, the result of modern constructive technologies, which combine high performance with a range of chromatic variations that can be adapted to furnished environments in a wide range of styles.*

## LED LIGHTING:

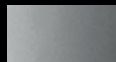
*Built with a modern 3500 °K LED lighting system which offers 3 lighting modes that can be selected and modified from the integrated RF remote control.*

## 1st STANDARD CONFIGURATION:



*Nordik Air Design 140 - 17 Titanium / code 61036*

*Nordik Air Design 140 - 29 Titanium / code 61037*



*Nordik Air Design 160 - 29 Titanium / code 61038*

*Nordik Air Design 180 - 29 Titanium / code 61042*



*INTEGRATED RF REMOTE CONTROL*





VORTICE

CARBON FIBRE BLADES:

*Highly resistant, lightweight, excellent aesthetic impact,  
high performance and low noise emissions.*

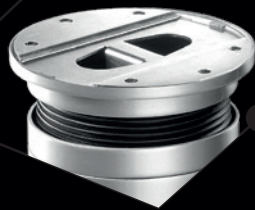
*Available with varying diameters 120 - 140 - 160.*

Designer: **momoDESIGN**



# NORDIK AIR DESIGN

5-speed reversible ceiling fan



#### RETRACTABLE FASTENING:

*The particular shape of the suspension tube lets you keep the hooking device hidden.*

#### COLOURS:

*Motor unit kit and suspension system kit coated in grey titanium.*







REVERSIBLE FUNCTION:

*Choice of direction of blade rotation, clockwise or counter-clockwise, so as to direct the generated air flow in the most appropriate direction for your needs.*

CEILING INSTALLATION

*Ceiling installation is implemented thanks to its "spaceless" fastening system, suitable for ceilings sloped up to 20°.*

Designer: **momoDESIGN**



# NORDIK AIR DESIGN

5-speed reversible ceiling fan

LED LIGHTING:

*Built with a modern 3500 °K LED lighting system which offers 3 lighting modes that can be selected and modified from the remote control.*

*1. Work environments*



*2. Home environments*



*3. Mixed home-work environments*



*1. WORK ENVIRONMENT ("dark light"): powered by 50 LEDs in the outer crown of the ceiling lamp, 70° light beam, intensity adjustable as desired.*





2. HOME ENVIRONMENT: *powered by 60 LEDs in the central part of the ceiling lamp, 120° light beam, intensity adjustable as desired.*



3. MIXED HOME-WORK ENVIRONMENT: *powered by all 110 LEDs on the ceiling lamp, intensity adjustable as desired.*



Designer: **MOMO**DESIGN



# NORDIK AIR DESIGN

5-speed reversible ceiling fan



COLOURS:

*Motor unit kit and suspension system kit  
coated in matte white.*

## 2nd STANDARD CONFIGURATION



*Nordik Air Design 140 - 17 White / code 61033*

*Nordik Air Design 140 - 29 White / code 61034*



*Nordik Air Design 160 - 29 White / code 61035*

*Nordik Air Design 180 - 29 White / code 61041*



*INTEGRATED RF REMOTE CONTROL*



CARBON FIBRE BLADES:  
*Resistant, lightweight, and with low noise emissions.*

Designer: **momoDESIGN**





# NORDIK AIR DESIGN

5-speed reversible ceiling fan



COLOURS:

*Motor unit kit and suspension system kit  
in semi-transparent thermoplastic resin.*

## 3rd STANDARD CONFIGURATION:



*Nordik Air Design 140 - 17 Transparent / code 61030*

*Nordik Air Design 140 - 29 Transparent / code 61031*



*Nordik Air Design 160 - 29 Transparent / code 61032*

*Nordik Air Design 180 - 29 Transparent / code 61039*



*INTEGRATED RF REMOTE CONTROL*





CARBON FIBRE BLADES:  
*Resistant, lightweight, and with low noise emissions.*

Designer: **MOMO**DESIGN



# NORDIK AIR DESIGN

5-speed reversible ceiling fan



## BLADE FINISHES:

*The blade kits, all in carbon, are also available with 3 different wood finishes: wenge, rosewood and oak.*

*Carbon / Wenge*

## CUSTOMISATION:

*Create your Air Design however you like: choose the blade kit finish, the colour of the suspension system kit and the motor unit kit directly from our new configurator, available soon on our website [vortice.com](http://vortice.com).*





Carbon / Rosewood

Carbon / Oak



*N.B. Blade kits are not sold separately. Each kit includes 3 blades of the same colour.*



# NORDIK AIR DESIGN

5-speed reversible ceiling fan

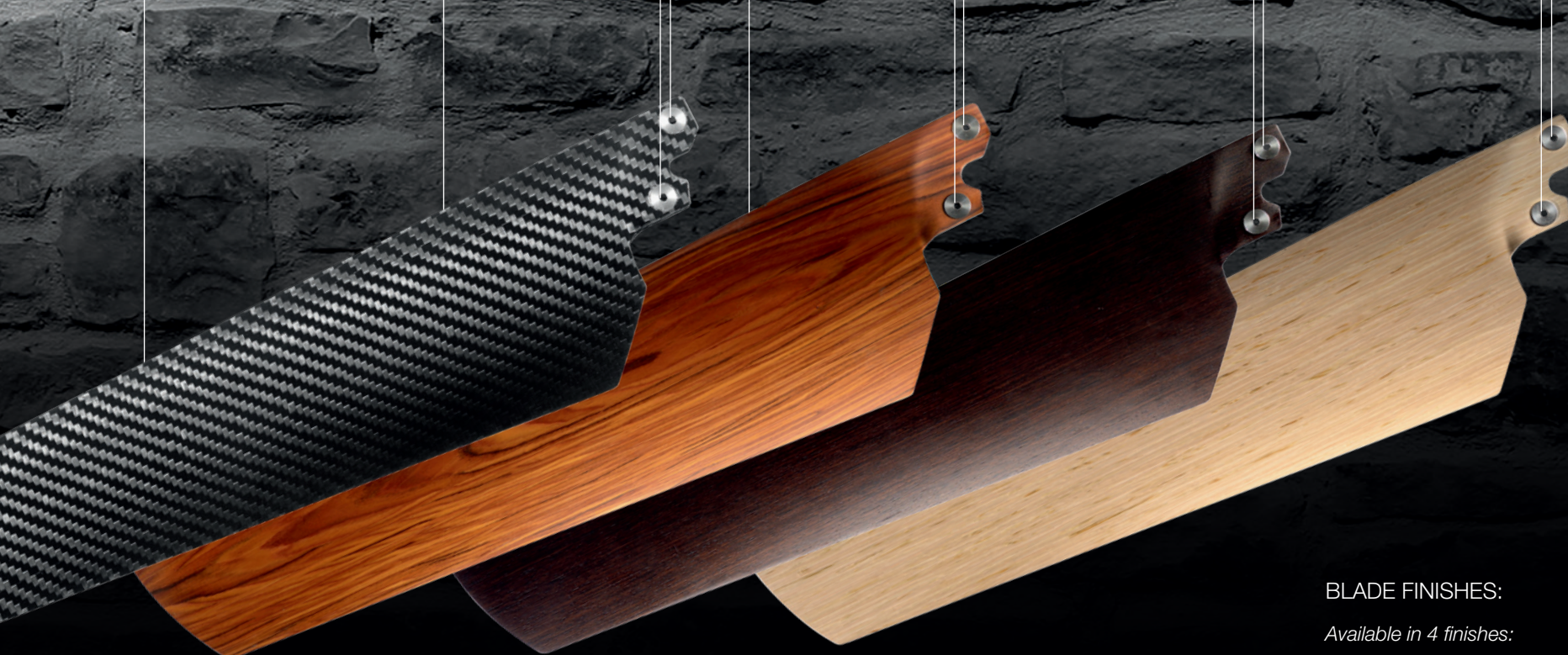
SUSPENSION SYSTEM KIT:

Available in 4 colours: WHITE, TRANSPARENT, RED and TITANIUM.

Choice of 3 different lengths: 28 - 40 - 77,5 cm







BLADE FINISHES:

Available in 4 finishes:

- Visible CARBON - CARBON/ROSEWOOD
- CARBON/WENGE - CARBON/OAK

Choice of blade dimensions: 120 - 140 - 160 - 180 cm.

MOTOR KIT KIT:

Available in 4 colours: WHITE, TITANIUM, RED and TRANSPARENT.





# NORDIK AIR DESIGN

5-speed reversible ceiling fan



## ENVIRONMENTS:

*The new Nordik Air Designs are especially suitable for environments featuring sophisticated style furnishings...*



\* Standard model 140 - 29 Transparent (code 61031)



# NORDIK AIR DESIGN

5-speed reversible ceiling fan



\* Standard model 140 - 29 White (code 61034)





\* Customized configuration: White motor unit kit (21021), White suspension system kit 290 (21046), Carbon Wenge blade kit 160 (21071).

# NORDIK AIR DESIGN

5-speed reversible ceiling fan



\* Customized configuration: White motor unit kit (21021), White suspension system kit 290 (21046), Carbon Oak blade kit 160 (21070).





\* Customized configuration: Titanium motor unit kit (21022), Titanium suspension system kit 290 (21047), Carbon Rosewood blade kit 160 (21069).



# NORDIK AIR DESIGN

5-speed reversible ceiling fan



\* Customized configuration: Red motor unit kit (21023), Red suspension system kit 290 (21048), Carbon Rosewood blade kit 160 (21068).

TECHNICAL DATA:

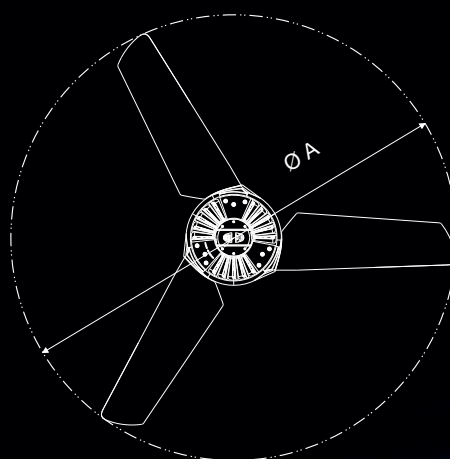
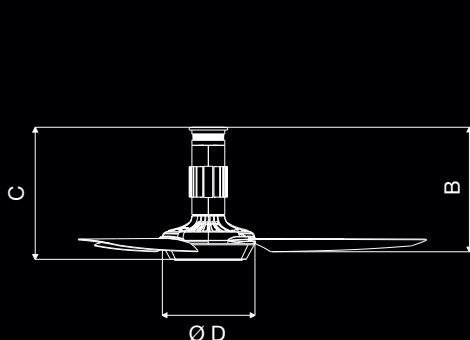
Standard models	Code	Colour	V	Hz	W	A	RPM	Nr. Blades	Max Flow Rate m³/h
Nordik Air Design 140 - 17	61030	Transparent	220/240	50	115	0.54	184	3	12500
	61033	White							
	61036	Titanium							
Nordik Air Design 140 - 29	61031	Transparent							
	61034	White							
	61037	Titanium							
Nordik Air Design 160 - 29	61032	Transparent					162	15500	
	61035	White							
	61038	Titanium							
Nordik Air Design 180 - 29	61039	Transparent					148	16500	
	61041	White							
	61042	Titanium							

TECHNICAL DATA FOR REGULATION 206/2012 EU

Nominal data	Reference parameter	Unit of measure	140-17	140-29	160-29	140-17	140-29	160-29	140-17	140-29	160-29	180-29	180-29	180-29
			61030	61031	61032	61033	61034	61035	61036	61037	61038	61039	610341	61042
Maximum air flow rate	F	m³/min	208.33	258.33	208.33	258.33	208.33	258.33	208.33	258.33	275	275	275	275
Power absorbed by the fan	P	W	115											
Operating values	SV	(m³/min) W	1.811	2.246	1.811	2.246	1.811	2.246	1.811	2.246	2.391	2.391	2.391	2.391
Sound power level	LWA	dB(A)	48.2	48.7	48.2	48.7	48.2	48.7	48.2	48.2	48.2	48.9	48.9	48.9
Air speed	C	m/sec	2.46	2.23	2.46	2.23	2.46	2.23	2.46	2.23	1.42	1.42	1.42	1.42
Measurement name for operating value	IEC 60879; EN62301: UNI EN ISO 3741													

Contact for further information: Vortice Elettrosociali Spa, Strada Cerca, 2 - 20067 Zoate di Tribiano (MI) Italy

DIMENSIONS:



Models	Ø A	B	C	Ø D
Nordik Air Design 140 - 17	140	40	42,5	30
Nordik Air Design 140 - 29				
Nordik Air Design 160 - 29	160	52	54,5	
Nordik Air Design 180 - 29				

Dimensions (cm)



The IMQ logo indicates conformity with European safety standards for products certified by the Italian Quality Mark Institute.





# NORDIK AIR DESIGN

5-speed reversible ceiling fan

## SUSPENSION SYSTEM KIT:



Models	170	290	665
TRANSPARENT Suspension System Kit	21040	21045	21050
WHITE Suspension System Kit	21041	21046	21051
TITANIUM Suspension System Kit	21042	21047	21052
RED Suspension System Kit	21043	21048	21053

## MOTOR UNIT KIT:



Colour	Transparent	White	Titanium	Red
MOTOR UNIT kit	21020	21021	21022	21023

## BLADE KIT:



Dimensions	120 cm	140 cm	160 cm	180 cm
CARBON Blade Kit	21060	21064	21068	21072
CARBON ROSEWOOD Blade Kit	21061	21065	21069	21073
CARBON OAK Blade Kit	21062	21066	21070	21074
CARBON WENGE Blade Kit	21063	21067	21071	21075

CUSTOMIZED CONFIGURATION:

- White Suspension System Kit 290 code 21046
- Red Motor Unit Kit code 21023
- Carbon Blade Kit 160 code 21068

CUSTOMIZED CONFIGURATION:

- Titanium Suspension System Kit 290 code 21047
- White Motor Unit Kit code 21021
- Carbon Oak Blade Kit 160 code 21070







Vortice Elettrosociali S.p.A.  
Strada Cerca, 2 - Frazione di Zoate - 20067 Tribiano (Milan)  
Tel. (+39) 02 906991 - Fax (+39) 02 9064625  
[www.vortice.com](http://www.vortice.com)



*The descriptions and illustrations in this catalogue are intended for indicative purposes only and are not binding. Vortice therefore reserves the right, without prejudice to the essential features of the types described and illustrated herein, to make any changes to the parts, details or supplies of accessories which it deems appropriate for the purpose of improvement or any constructive or commercial needs at any time and without notice.*